

Products > Jewel Bearings > Ring Jewel Assemblies

Sapphire Jewel Bearing Assemblies

Ring Jewels can be mounted into bushings or screws. This style can ease your mounting of the bearing into your final instrument. A ring jewel can be mounted into a plain bushing or into a screw to be coupled with an endstone. To assist with fine tuning assembly for load applications Ring Jewel Assemblies can also be mounted with or without a spring. Applications include Flow Meters, Gauges, Meters, Indicators, Aircraft Instruments, Gyros and Watches

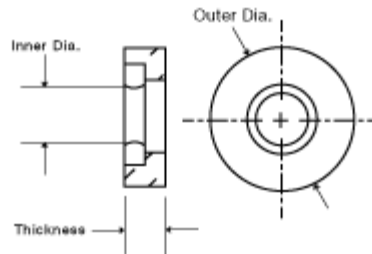


Model Code: B=Bombe, C=Cup, O=Olive, E=Endstone

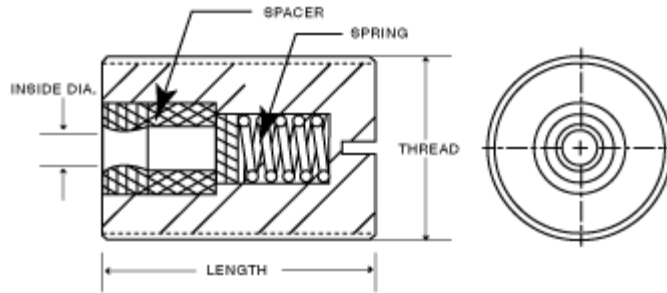
Model	Inside Diameter	Outside Diameter	Length	Material
RS-100-CO	.0124/.0126"	.1246/.1249"	.135/.145"	Brass
RS-110-CO	.0124/.0126"	.1246/.1249"	.155/.157"	Brass
RS-120-CEO	.0124/.0126"	.1246/.1249"	.109/.111"	Brass
RS-130-CEOR	.0124/.0126"	.1246/.1249"	.109/.111"	Brass
RS-140-CEO	.0124/.0126"	.1246/.1249"	.135/.145"	Brass
RS-150-CEO	.0124/.0126"	.1246/.1249"	.245/.255"	Brass
RS-160-CEO	.0124/.0126"	.1257/.1260"	.059/.061"	Brass
RS-170-CEO	.0124/.0126"	.1558/.1561"	.151/.161"	Brass
RS-180-O	.0183/.0185"	.1195/.1198"	.019/.021"	Brass
RS-190-CO	.0183/.0185"	.1202/.1205"	.025/.026"	Brass
RS-20-CO	.0123/.0125"	.0945/.0960"	.029/.030"	Brass
RS-200-O	.0183/.0185"	.1202/.1205"	.029/.030"	Brass
RS-220-CO	.0199/.0201"	.1246/.1249"	.114/.116"	Brass
RS-230-CO	.0199/.0201"	.1246/.1249"	.141/.151"	Brass
RS-240-CEO	.0199/.0201"	.1257/.1260"	.059/.061"	Brass

RS-250-BCO	.0211/.0212"	.0900/.0905"	.029/.033"	Brass
RS-260-BO	.0211/.0213"	.310/.311"	.170/.180"	Brass
RS-270-BEO	.0211/.0213"	.100x100" Screw	.146/.156"	Brass
RS-280-O	.0300/.0301"	#6-56 NS2 Screw	.213/.223"	Brass-Nickel-Plated
RS-30-CO	.0123/.0125"	.1235/.1265"	.029/.030"	Brass
RS-310-BO	.0310/.0315"	.1245/.1250"	.040/.044"	Brass
RS-320-O	.0310/.0315"	.0700/.0702"	.048/.052"	Aluminum
RS-330-O	.0312/.0314"	.1100/.1103"	.034/.036"	Brass
RS-350-O	.0312/.0314"	.1202/.1205"	.045/.046"	Brass
RS-360-O	.0318/.0322"	.0940/.0943"	.039/.041"	Brass
RS-370-O	.0402/.0404"	.1235/.1265"	.045/.046"	Brass
RS-380-O	.0463/.0465"	.1235/.1265"	.019/.021"	Brass
RS-390-O	.0463/.0465"	.1235/.1265"	.029/.030"	Brass
RS-40-CO	.0123/.0125"	.1202/.1205"	.029/.030"	Brass
RS-400-BO	.0468/.0470"	.1260/.1262"	.035/.045"	Brass
RS-410-O	.0500/.0502"	.153/.159"	.057/.063"	Brass
RS-420-EO	.0500/.0502"	#1/4-28 spring loaded	.266/.297"	Brass-Nickel-Plated
RS-435-EO	.0625/.0627"	#1/4-20Screw	.440"	316 Stainless Steel
RS-50-CO	.0123/.0125"	.1202/.1205"	.034/.036"	Brass
RS-60-CO	.0123/.0125"	.1202/.1205"	.045/.046"	Brass
RS-80-CO	.0124/.0126"	.0944/.0947"	.034/.036"	Brass
RS-90-CEOR	.0124/.0126"	.0944/.0947"	.058/.060"	Brass

Sapphire Jewel Bearing Assemblies Cross Section



RING JEWEL ASSEMBLY



SPRING-LOADED ASSEMBLY

NOT SEEING EXACTLY WHAT YOU NEED?

We specialize in creating a wide range of custom optical components and custom mechanical components including a variety of shapes - from internal holes and tapers to outer flanges, angles and surface finishes. Contact us (800-922-0118) and we will consult with you to create a custom component that meets all of your specifications.